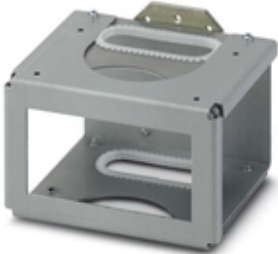


DIN rail mounting frame - FA MCR-D-RM - 1032996

Please be informed that the data shown in this PDF Document is generated from our Online Catalog. Please find the complete data in the user's documentation. Our General Terms of Use for Downloads are valid (<http://phoenixcontact.com/download>)



The DIN rail mounting frame can be used to mount a display on a DIN rail, e.g., in the control cabinet. The DIN rail mounting frame can be used with the following digital displays: FA MCR-(EX)-DS-I-I-OLP, FA MCR-(EX)-D-TUI-UI-2REL-UP



Key Commercial Data

Packing unit	1 pc
Minimum order quantity	10 pc
GTIN	 4 055626 537511
GTIN	4055626537511
Weight per Piece (excluding packing)	580.000 g
Custom tariff number	73269098
Country of origin	Germany

Technical data

Environmental Product Compliance

China RoHS	Environmentally Friendly Use Period = 50 years
	For details about hazardous substances go to tab "Downloads", Category "Manufacturer's declaration"

Classifications

eCl@ss

eCl@ss 10.0.1	27142336
eCl@ss 11.0	27142392
eCl@ss 9.0	27142336

DIN rail mounting frame - FA MCR-D-RM - 1032996

Classifications

ETIM

ETIM 6.0	EC002295
ETIM 7.0	EC002295